

ALTO 1 / CLAR "STRANGERS IN THE NIGHT" (Sinatra R/C)

8/5 (30) (Vocal Key F)

Arr - LONDON ORCHESTRATIONS

© _____

Comp - _____

CLAR

(5) TO ALTO 8

(ALTO)

(21)

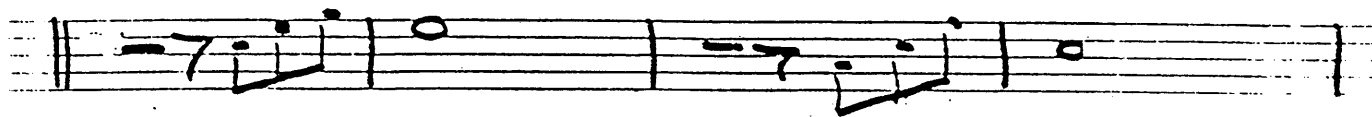
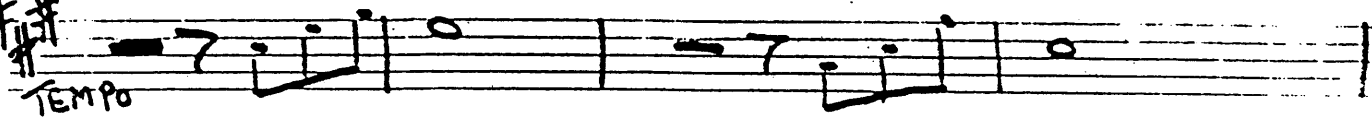
TO CLAR 4 Poco RIT

CLAR. 8VA IF POSSIBLE.

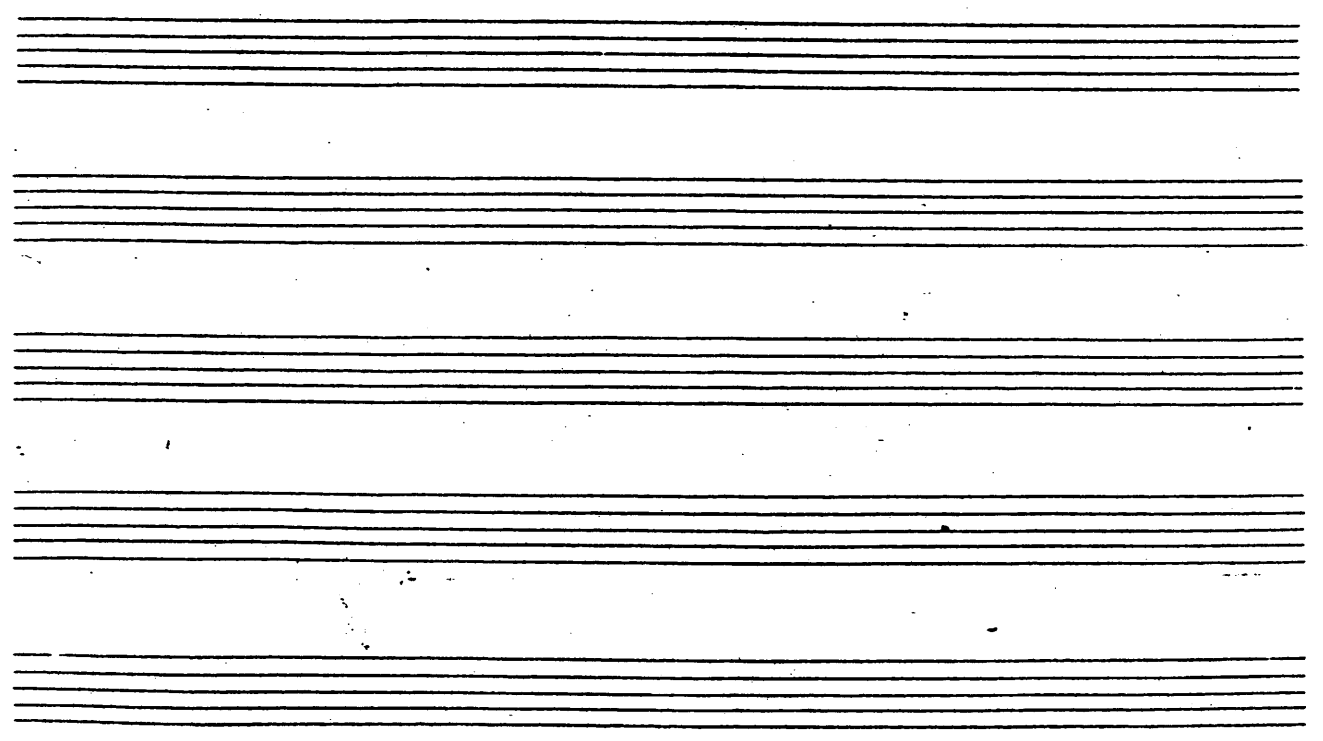
8VA IF POSSIBLE

#

TEMPO



AS IS



ALTO 2

"STRANGERS IN THE NIGHT"

Arr — LONDON ORCHESTRATIONS

© _____

Comp — _____

(5)

(21)

4

POCO RIT

(29)

Tempo

(37)

3

RIT - - - - -

(PLAY TO PROVIDE VOCAL CUE)

(45) $\frac{4}{4}$ \sharp

TEMPO

(53)

RAU

TENOR 1

"STRANGERS IN THE NIGHT"

Arr — LONDON ORCHESTRATIONS

© _____

Comp — _____

(5)

(21)

POLO RIT

(29)

TEMPO

(37)

RIT -----

(PLAY TO PROVIDE VOCAL CUE)

(45)

TEMPO

(53)

RAU

TENOR 2

"STRANGERS IN THE NIGHT"

Arr— LONDON ORCHESTRATIONS

© _____

Comp— _____

(5)

(21)

(29)

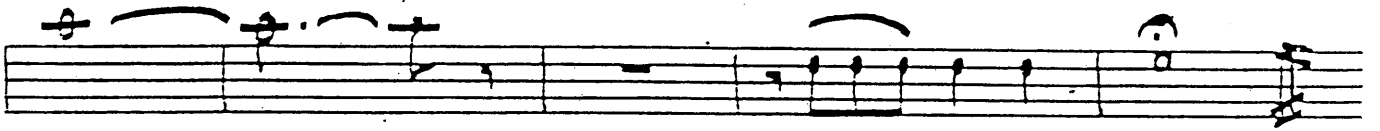
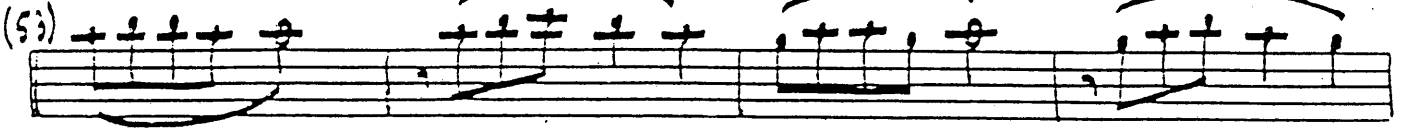
(37)

RIT -----

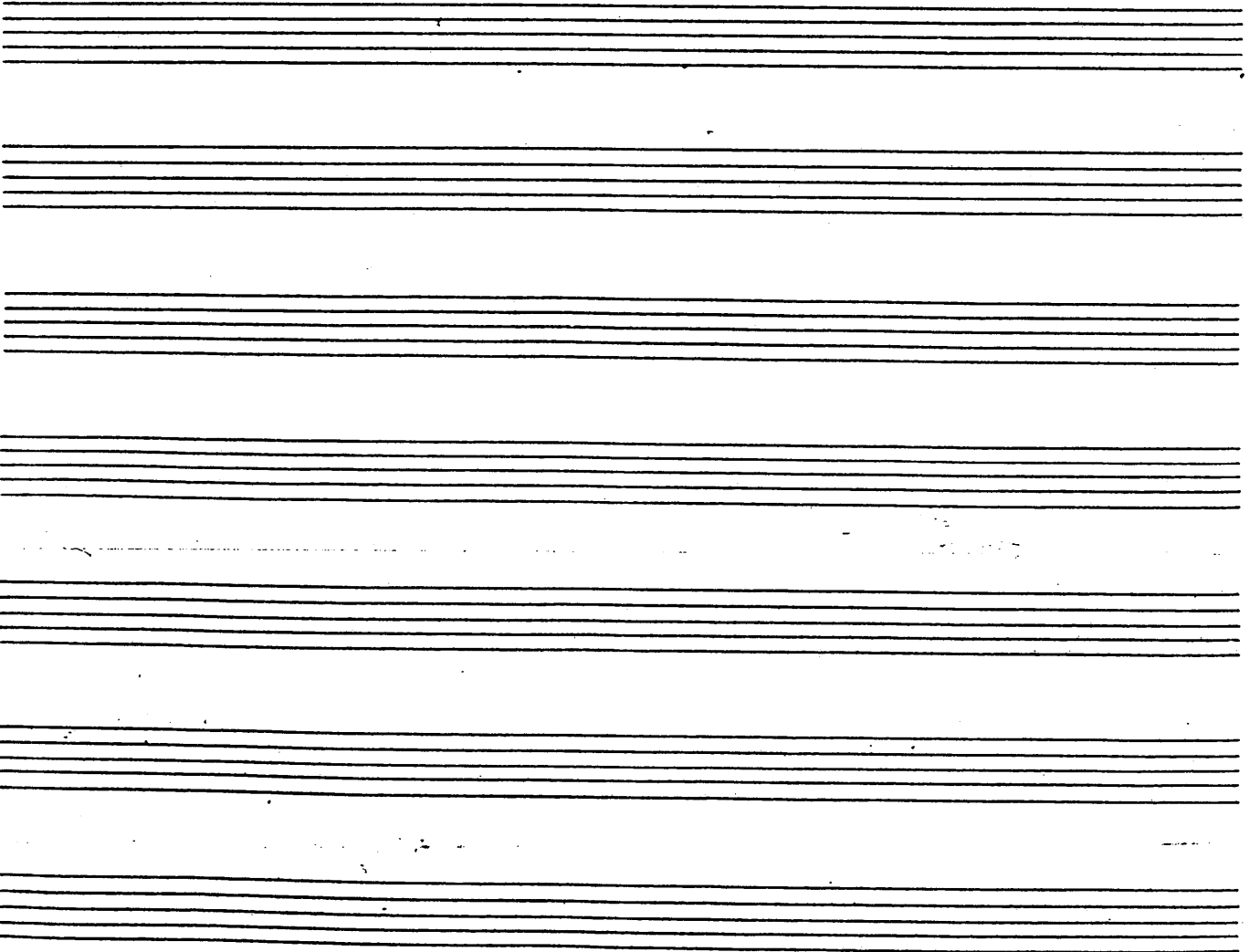
(PLAY TO PROVIDE VOCAL CUE)



TEMPO



RAU -----



BARITONE

"STRANGERS IN THE NIGHT"

Arr — LONDON ORCHESTRATIONS

© _____

Comp — _____

(5) 16

(21) 4

Poco RIT

(29) 7

TEMPO

(37)

3 (45) 8

RIT TEMPO

(53) 7 8

RAL - - - - - !

TRUMPET 1

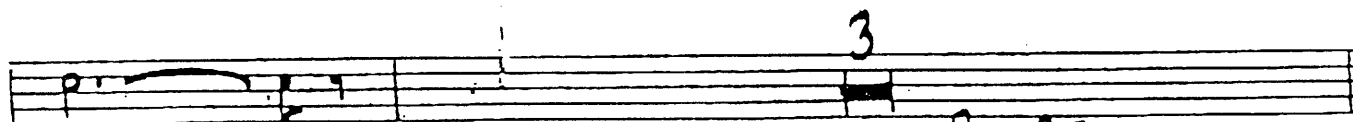
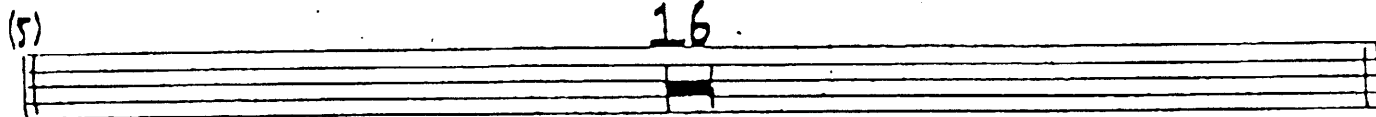
"STRANGERS IN THE NIGHT"

Arr — LONDON ORCHESTRATIONS

©

Comp —

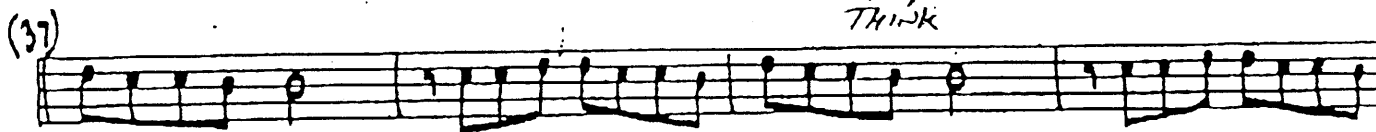
(CUP MUTE)



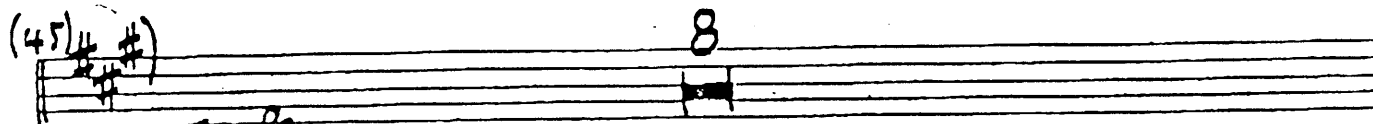
Poco RIT



↑ ↑
THINK



RIT



RAU

TRUMPET 2

"STRANGERS IN THE NIGHT"

Arr - LONDON ORCHESTRATIONS

© _____

Comp - _____

(CUP MUTE)

Musical staff with notes and slurs, starting with a treble clef and a key signature of one sharp (F#).

(5)

16

Musical staff with a single note and a bar line.

(21)

Musical staff with notes and slurs.

3

POW RIT

Musical staff with notes and a bar line.

(29) (OPEN)

6

TEMPO

Musical staff with notes and a bar line.

(37)

Musical staff with notes and slurs.

RIT

(45)

(SAXES PROVIDE VOCAL CUE HERE)

8

TEMPO

Musical staff with notes and a double bar line.

Musical staff with notes and a bar line.

(53)

Musical staff with notes and slurs.

Musical staff with notes and slurs.

TRUMPET 3

"STRANGERS IN THE NIGHT"

Arr — LONDON ORCHESTRATIONS

©

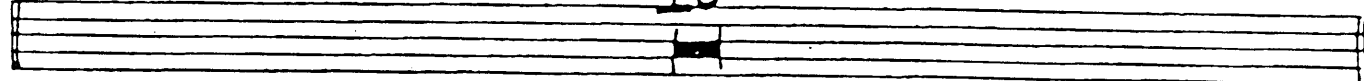
Comp —

(CUP MUTE)

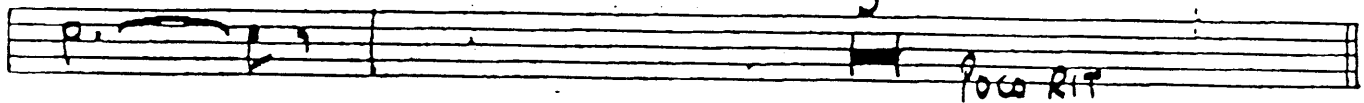
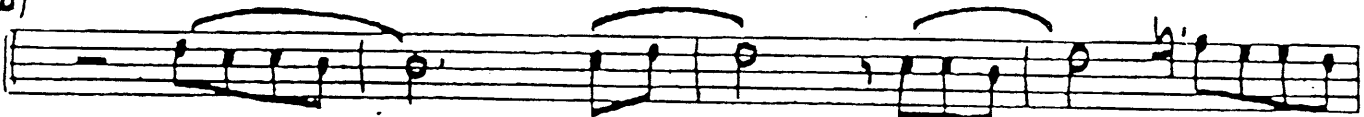


(5)

16



(21)



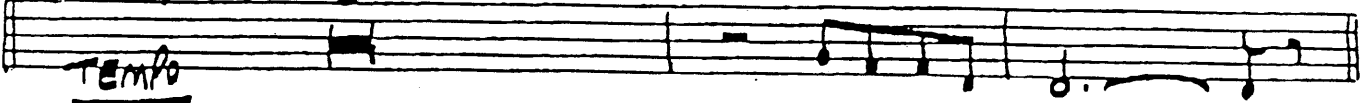
3

poco RIT

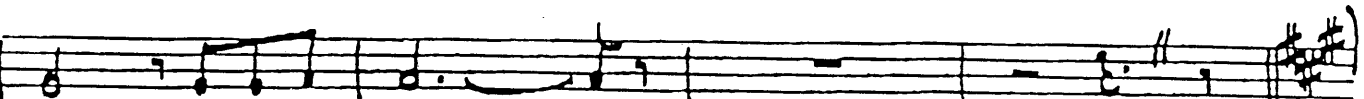
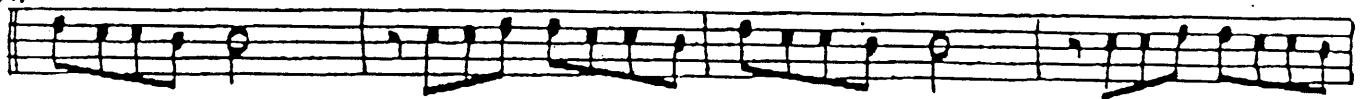
(29) (OPEN)

6

Tempo



(37)



RIT

(45) (F# C#)

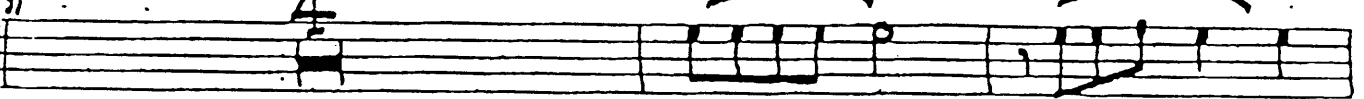
8

TEMPO



(53)

4



RAU

TRUMPET 4

STRANGERS IN THE NIGHT

Arr — LONDON ORCHESTRATIONS

© _____

Comp — _____

(CUP MUTE)

Musical staff with notes and slurs, starting with a treble clef and a key signature of one sharp (F#).

Staff (5) with a measure rest of 16 measures.

Musical staff (21) with notes and slurs.

Staff with a measure rest of 3 measures and the instruction Poco RIT.

Staff (29) with a boxed O/EN instruction, a measure rest of 6 measures, and a Tempo instruction.

Musical staff (37) with notes and slurs.

Musical staff with notes and slurs, ending with a double bar line and a key signature change to two sharps (F# and C#).

Staff (45) with a key signature change to two sharps (F# and C#), a Tempo instruction, and a measure rest of 8 measures.

Staff (53) with a measure rest of 4 measures and notes with slurs.

Musical staff with notes and slurs.

TROMBONE 1

"STRANGERS IN THE NIGHT"

Arr— LONDON ORCHESTRATIONS

© _____

Comp— _____

(5) 6

(21)

(29) 7

tempo

Poco RIT -----

RIT -----

TROMBONE 2

"STRANGERS IN THE NIGHT"

Arr — LONDON ORCHESTRATIONS

© _____

Comp — _____

Musical staff with notes and slurs. The staff contains a series of notes with stems, some grouped by slurs. The notes are mostly eighth and sixteenth notes.

(5)

Musical staff with notes and slurs. The staff contains a series of notes with stems, some grouped by slurs. The notes are mostly eighth and sixteenth notes.

(21)

Musical staff with notes and slurs. The staff contains a series of notes with stems, some grouped by slurs. The notes are mostly eighth and sixteenth notes.

(29)

Tempo

7

POW RIT -----

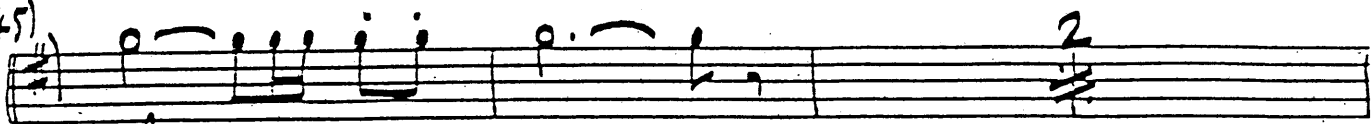
Musical staff with notes and slurs. The staff contains a series of notes with stems, some grouped by slurs. The notes are mostly eighth and sixteenth notes.

(37)

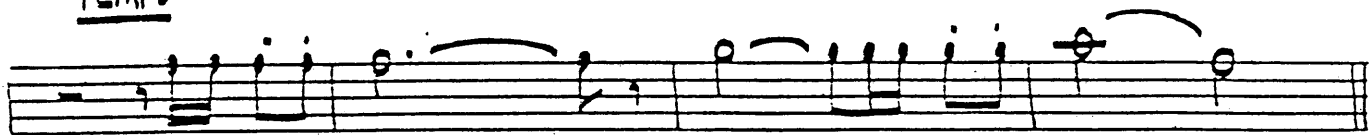
Musical staff with notes and slurs. The staff contains a series of notes with stems, some grouped by slurs. The notes are mostly eighth and sixteenth notes.

RIT -----

(45)



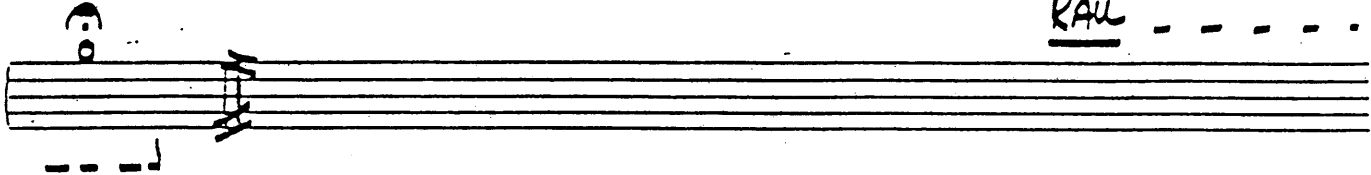
TEMPO



(53)



RAU - - - -



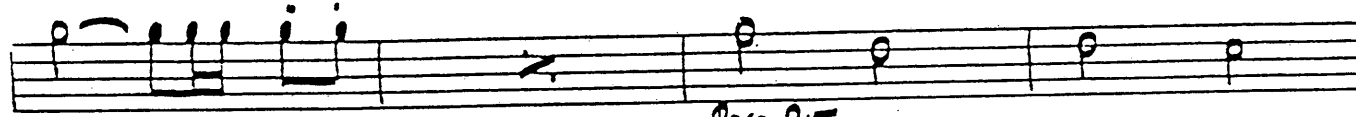
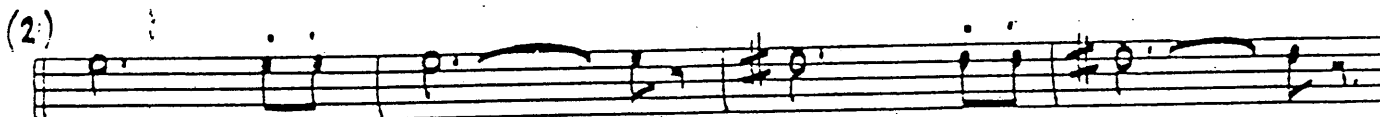
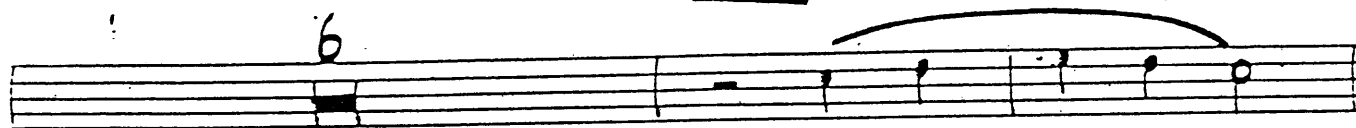
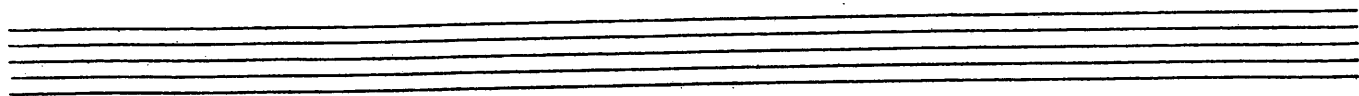
TROMBONE 3

"STRANGERS IN THE NIGHT"

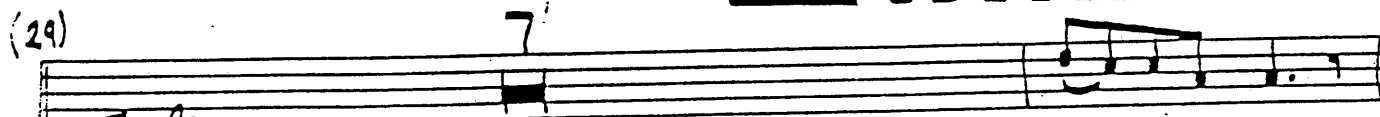
Arr — LONDON ORCHESTRATIONS

©

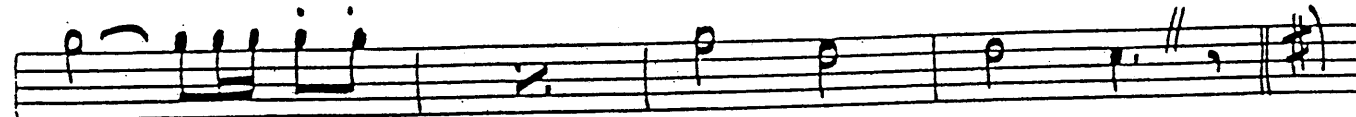
Comp —



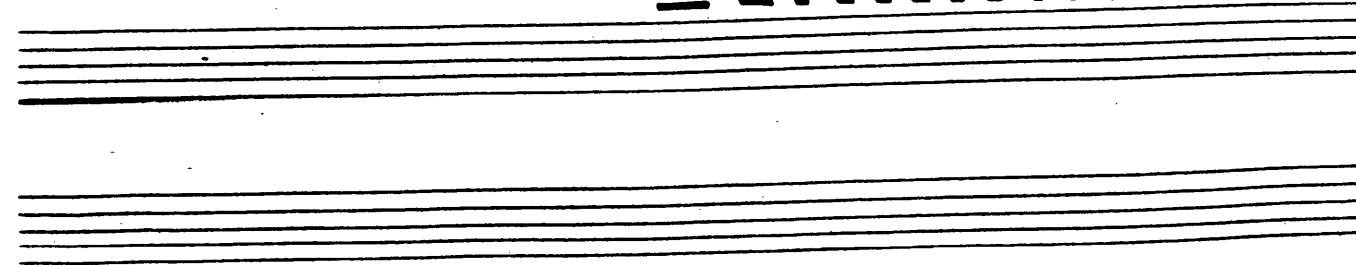
POLO RIT

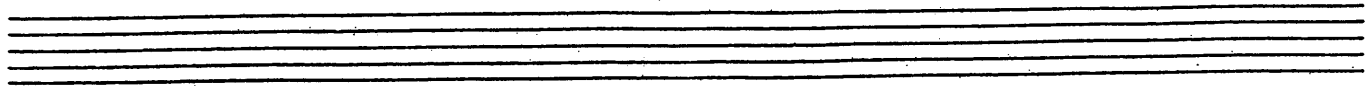
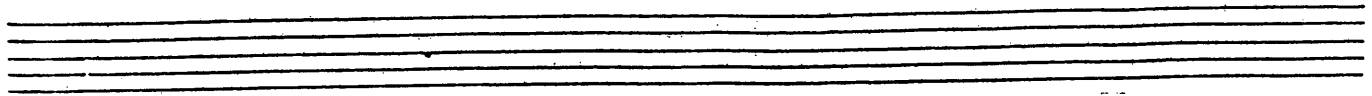


Tempo



RIT





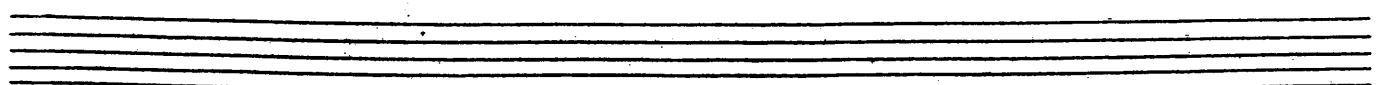
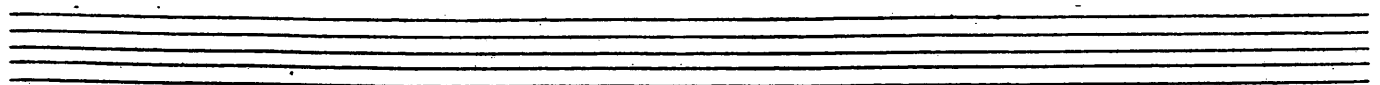
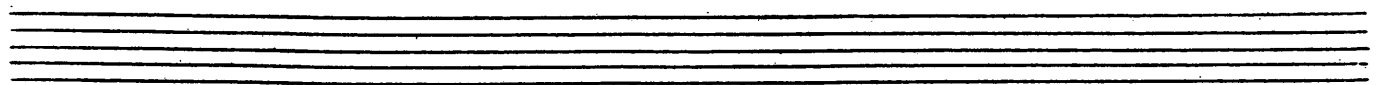
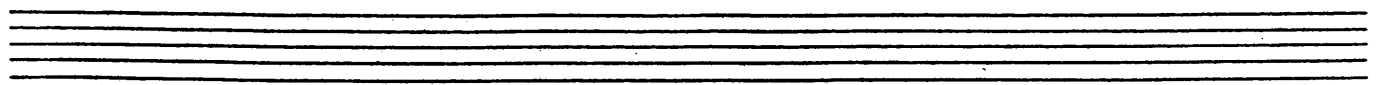
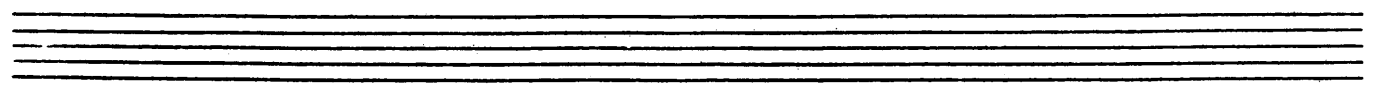
(45)

2

TEMPO

(53)

RAU - - - - -



BASS TROMBONE

"STRANGERS IN THE NIGHT"

Arr — LONDON ORCHESTRATIONS

© _____

Comp — _____

Musical staff with notes and slurs. The staff is in bass clef and 4/4 time. It contains several measures of music with slurs over groups of notes.

(5) 6

Musical staff with notes and slurs. The staff is in bass clef and 4/4 time. It contains several measures of music with slurs over groups of notes.

6

Musical staff with notes and slurs. The staff is in bass clef and 4/4 time. It contains several measures of music with slurs over groups of notes.

(21)

Musical staff with notes and slurs. The staff is in bass clef and 4/4 time. It contains several measures of music with slurs over groups of notes.

Musical staff with notes and slurs. The staff is in bass clef and 4/4 time. It contains several measures of music with slurs over groups of notes.

(29) 7 POLO RIT

Musical staff with notes and slurs. The staff is in bass clef and 4/4 time. It contains several measures of music with slurs over groups of notes. The tempo marking "POLO RIT" is written above the staff.

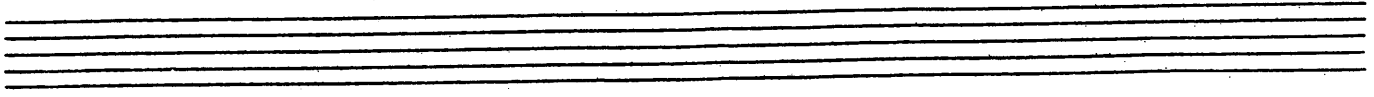
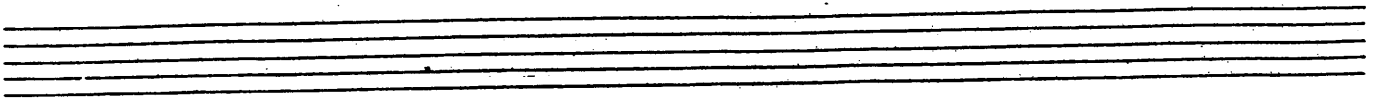
(37)

Musical staff with notes and slurs. The staff is in bass clef and 4/4 time. It contains several measures of music with slurs over groups of notes.

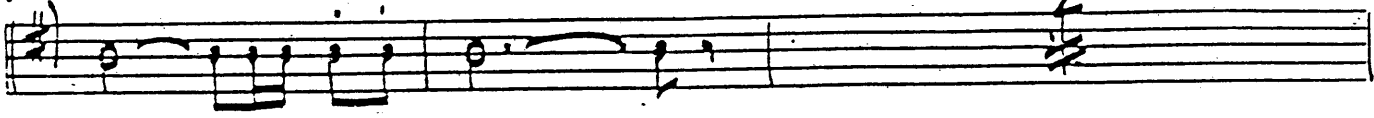
Musical staff with notes and slurs. The staff is in bass clef and 4/4 time. It contains several measures of music with slurs over groups of notes.

RIT

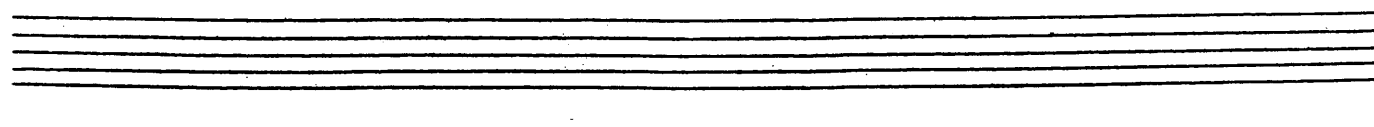
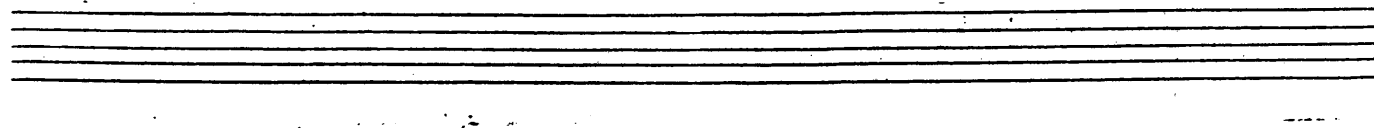
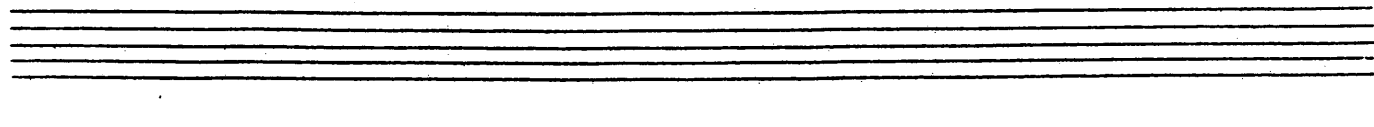
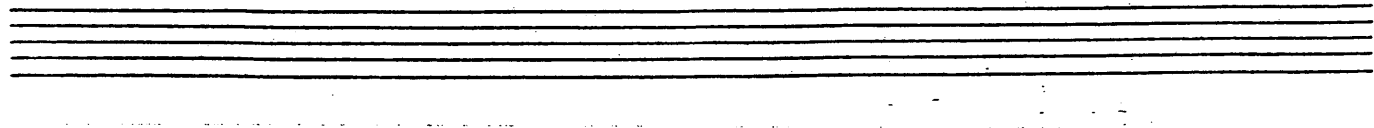
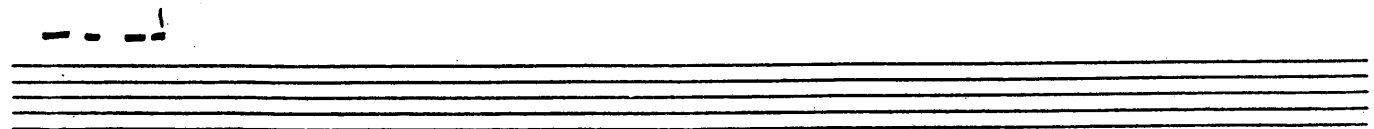
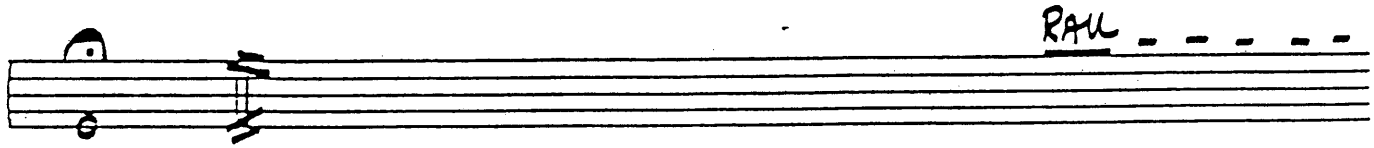
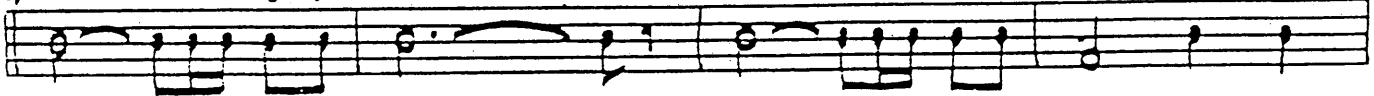
Empty musical staves at the bottom of the page.



(45)



(53)



KEYBOARDS

"STRANGERS IN THE NIGHT"

Arr — LONDON ORCHESTRATIONS

(♩ = 90)

©

Comp —

BRASS/FL.

Musical score for Brass/Flute. The top staff is in treble clef with a 4/4 time signature. It contains four measures of music with eighth-note patterns and rests. The bottom staff is in bass clef and contains four measures of chords: F, F, F, and G7 - Gm7 C7.

(5) PNO/W. VOCAL

SOLO

Musical score for Piano/Vocal Solo. The top staff is in treble clef with a 4/4 time signature. It contains four measures of music with eighth-note patterns. The bottom staff is in bass clef and contains four measures of chords: F, F, F, and F.

TROMB.

Musical score for Trombone. The top staff is in treble clef with a 4/4 time signature. It contains four measures of music with eighth-note patterns and a sharp sign in the third measure. The bottom staff is in bass clef and contains four measures of chords: F, Am7 - Ab0, Gm7, and F.

SxS

Musical score for Saxophone. The top staff is in treble clef with a 4/4 time signature. It contains four measures of music with eighth-note patterns. The bottom staff is in bass clef and contains four measures of chords: Gm7, F, F, and F.

Musical score for Piano. The top staff is in treble clef with a 4/4 time signature. It contains four measures of music with eighth-note patterns. The bottom staff is in bass clef and contains four measures of chords: C7 sus, C7, F, and F.

(21) Solo (If no vocal)

Handwritten musical notation for system (21) first system. The upper staff contains a melodic line with eighth and sixteenth notes. The lower staff contains a bass line with chords: Am7 (b5) and D7 (b9).

Handwritten musical notation for system (21) second system. The upper staff continues the melodic line. The lower staff contains chords: Gm7, Gm7 (b5), F/C - Dm7, and Gm7 - C7. A tempo marking POCO RIT is written above the second measure of the lower staff.

(29) [SXS]

Handwritten musical notation for system (29) first system. The upper staff contains a melodic line. The lower staff contains a bass line with a tempo marking TEMPO in the first measure.

Handwritten musical notation for system (29) second system. The upper staff contains a melodic line with a long note in the third measure. The lower staff contains a bass line with chords: C7 and F.

(37) (PLAY)

Handwritten musical notation for system (37) first system. The upper staff contains a melodic line with eighth notes. The lower staff contains chords: Am7 (b5) and D7 (b9).

Handwritten musical notation for system (37) second system. The upper staff contains a melodic line with eighth notes. The lower staff contains chords: Gm7, Gm7 (b5), F/C - Dm7, and Gm7 - C7. A tempo marking RIT is written above the second measure of the lower staff. The system ends with a double bar line and a sharp sign (#).

PIANO ~3~ (FLUTE)

"STRANGERS IN THE NIGHT"

(45)

Musical notation for piano system (45). The system consists of two staves. The upper staff contains a melodic line with notes and rests. The lower staff contains a bass line with notes and rests. Above the system, there are two small diagrams showing fingerings for the right hand. The word "TEMPO" is written in the left margin.

(8VA)

Musical notation for piano system (8VA). The system consists of two staves. The upper staff contains a melodic line with notes and rests. The lower staff contains a bass line with notes and rests. Above the system, there are two small diagrams showing fingerings for the right hand. The notes "Am7" and "D7" are written in the lower staff.

(53)

Musical notation for piano system (53). The system consists of two staves. The upper staff contains a melodic line with notes and rests. The lower staff contains a bass line with notes and rests. Above the system, there are two small diagrams showing fingerings for the right hand. The notes "Am7" and "D7" are written in the lower staff.

BRASS/FLUTE

Musical notation for brass/flute system. The system consists of two staves. The upper staff contains a melodic line with notes and rests. The lower staff contains a bass line with notes and rests. The word "RAU" is written in the left margin. The notes "D7" and "Am7" are written in the lower staff.

Musical notation for piano system. The system consists of two staves. The upper staff contains a melodic line with notes and rests. The lower staff contains a bass line with notes and rests. The note "G" is written in the lower staff.

BASS GTR.

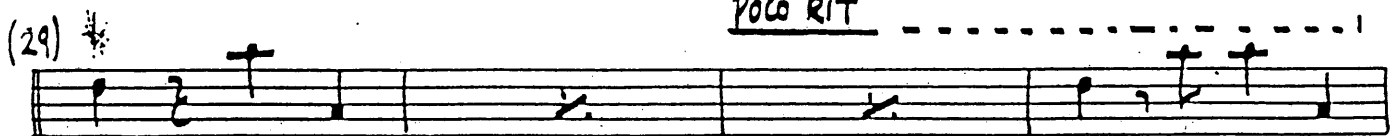
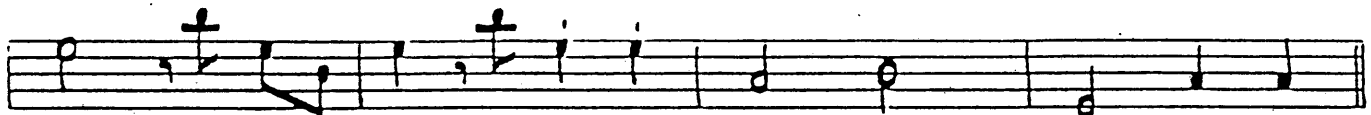
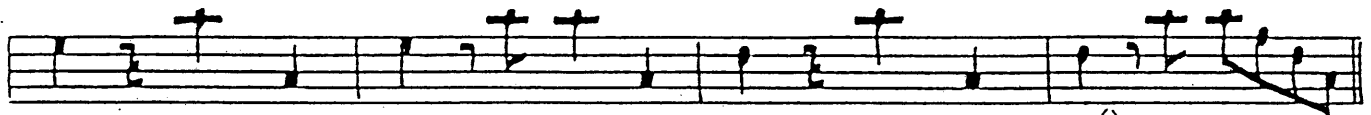
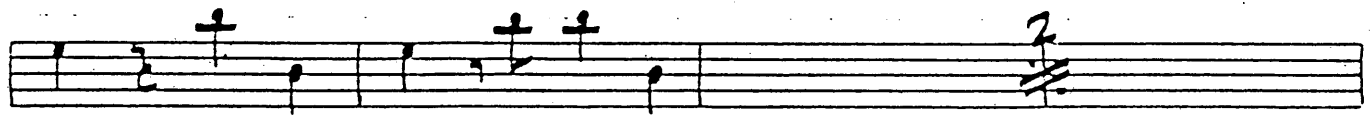
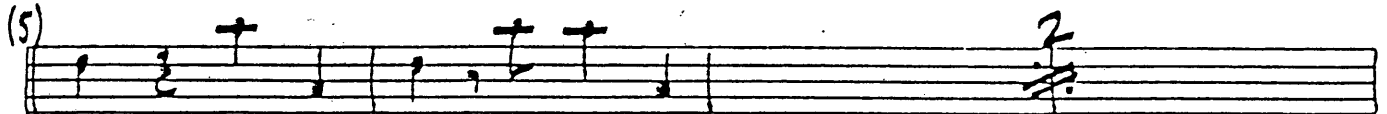
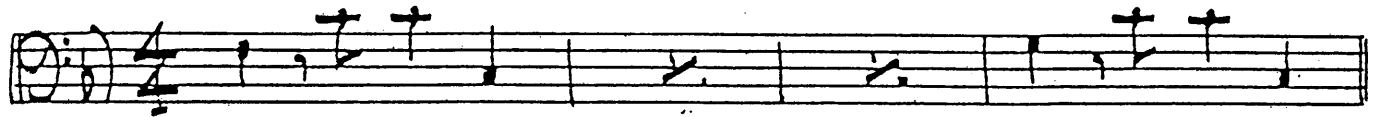
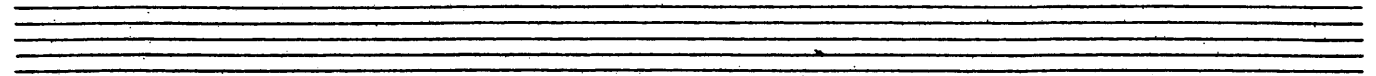
STRANGERS IN THE NIGHT

Arr — LONDON ORCHESTRATIONS

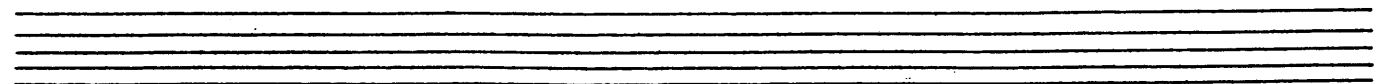
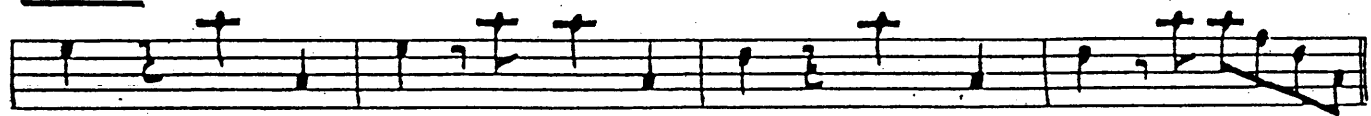
(♩ = 90)

© _____

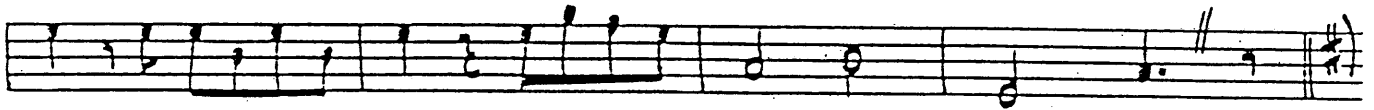
Comp — _____



Tempo



(37)

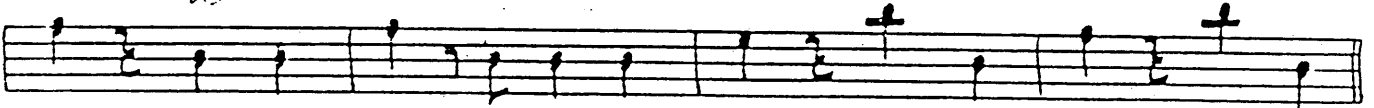


(45)



TEMPO

Do Be Do Be Do



(53)



RAU

DRUMS
"STRIKERS IN THE NIGHT"

Arr — LONDON ORCHESTRATIONS

(♩ = 90)

© _____

Comp — _____

(H/H) (CROSS STICK) (4)

(5) (4) (8) *M.P.*

(12)

(21) (S.D.) (4)

(29) (CROSS STICK) POCO RIT (4)

TEMPO

ENS. (37) (OPEN CYM/S.D.) (T.T.)

f

RIT

(45)

M^f TEMPO

(T.T.)

2

(53)

(T.T.)

(T.T.)

(T.T.)

(T.T.)

RAU

VOCAL

"STRANGERS IN THE NIGHT" (FRANK SINATRA)

Arr — LONDON ORCHESTRATIONS (♩ = 90)

© _____

Comp — _____

(5)

STRAN-GER'S IN THE NIGHT EX-CHAN-GING GLANCES WON-DRING IN THE NIGHT

WHAT WERE THE CHANCES — WED BE STARING LOVE BE-FORE THE NIGHT WAS

THROUGH — SOMETHING IN YOUR EYES WAS — SO IN-VIT-ING

SOMETHING IN YOUR SMILE WAS SO EX-CI-TING SOME-THING IN MY HEART

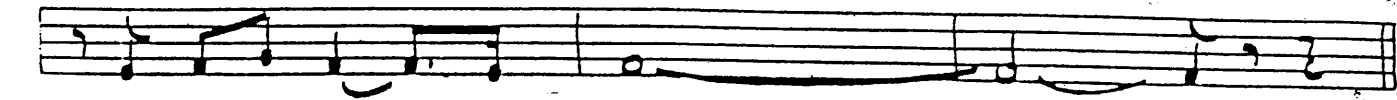
TOLD - ME I MUST HAVE YOU — STRANGERS IN THE NIGHT

TWO LONELY PEOP-LE WE WERE STRANGERS IN THE NIGHT UP TO THE MOMENT WHEN WE

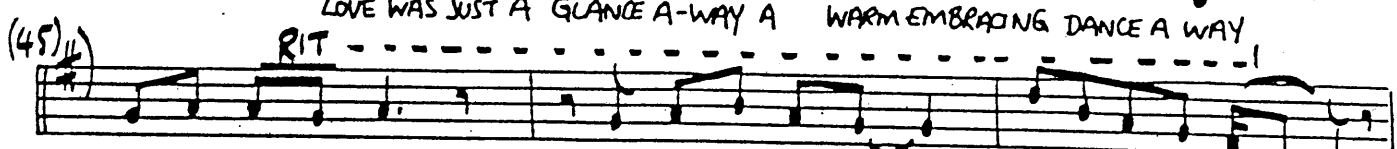
SAID OUR FIRST HELLO LITTLE DID WE KNOW LOVE WAS JUST A GLANCE AWAY A

WARM EMBRACING DANCE A-WAY AND E-VER SINCE THAT NIGHT WE'VE BIN TO-GE-THER

LO-VERS AT FIRST SIGHT IN LOVE FOR E-VER — IT TURN'D OUT SO RIGHT

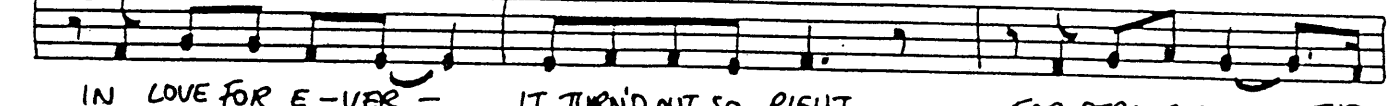


(37) FOR STRANGERS IN - THE NIGHT

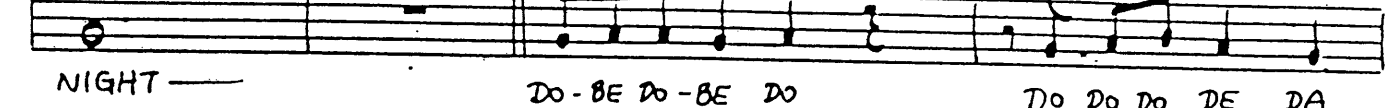


LOVE WAS JUST A GLANCE A-WAY A WARM EMBRACING DANCE A WAY

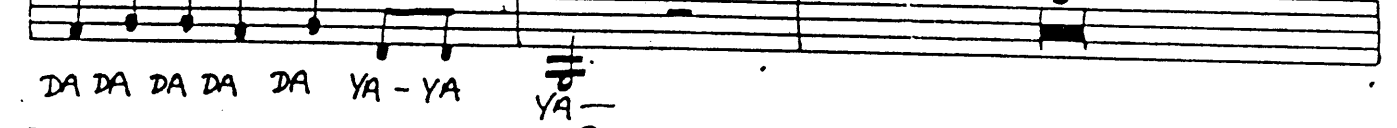
E-VER SINCE THAT NIGHT WE'VE BIN' TO-GE-THER LOVERS AT FIRST SIGHT



IN LOVE FOR E-VER - IT TURN'D OUT SO RIGHT FOR STRANGERS IN - THE



NIGHT - DO-BE DO-BE DO DO DO DO DE DA



DA DA DA DA DA YA-YA YA-



WE'RE STRANGERS IN THE NIGHT

